



# AUCTION

LEADING THE INDUSTRY SINCE 1945

Friday – September 7, 2018 – 10:30 AM  
Real Estate Sells At 11:00 AM

## Martin Family Dispersal Auction

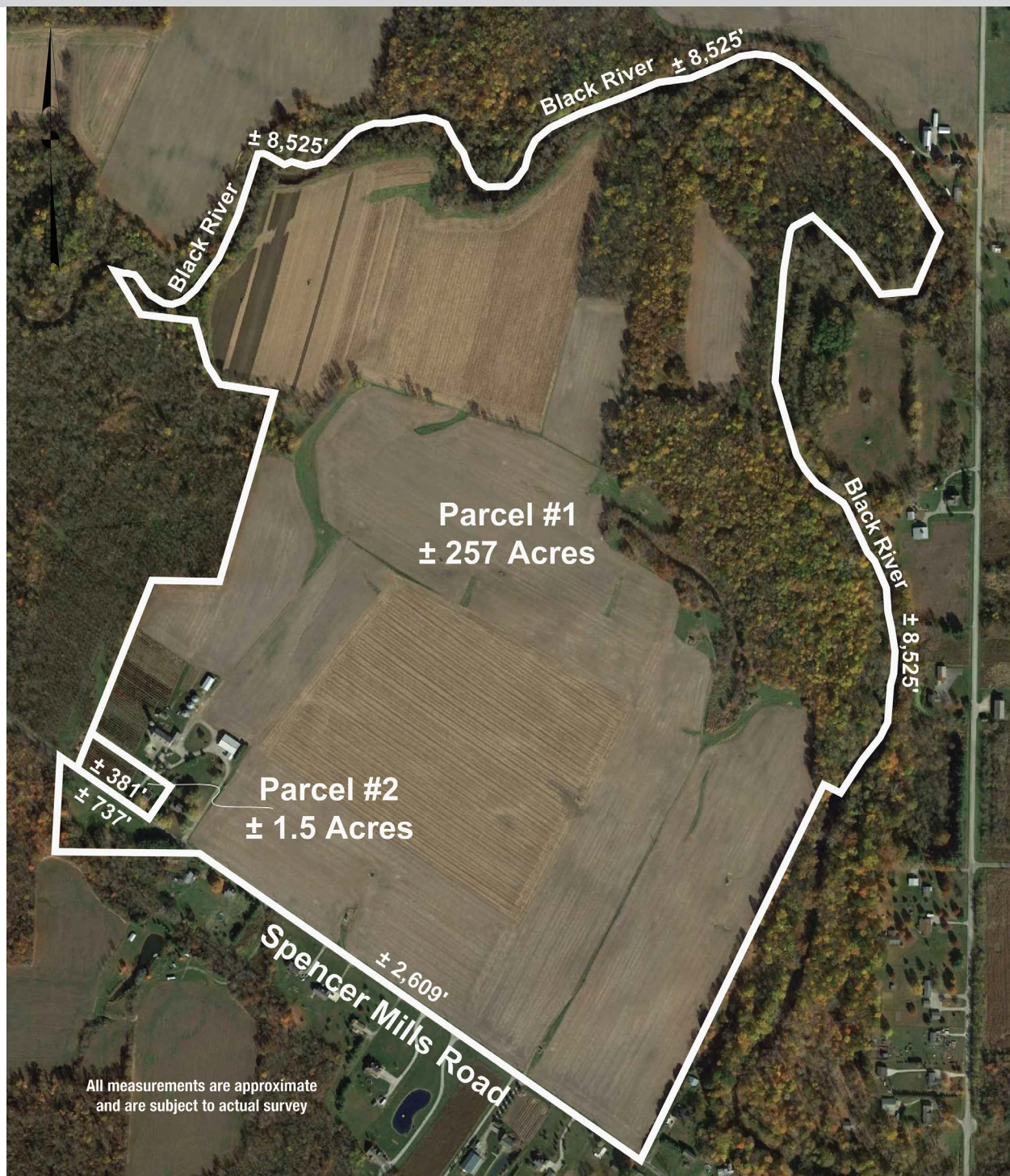
EXCELLENT 257-ACRE GRAIN FARM

Also Two-Story Home W/ 1.5 Acres – Full Line Of John Deere Tractors  
Backhoe – Combine – Antique Tractors – Grain & Tillage Equipment  
Truck – Tools & More – Spencer Twp. – Medina County, Ohio

All sells on location:

**11573 Spencer Mills Rd. Spencer, OH 44275**

**Directions:** Take RT 18 west of Medina to RT 301 or take RT 301 north of RT 224 or I-71 to Spencer then east on RT 162 to River Corners Rd. then north to Spencer Mills Rd. & east to auction. Watch for KIKO signs.



Information is believed to be accurate but not guaranteed.



**330.455.9357 • kikoauctions.com**



**SALE #1 – QUALITY 257-ACRE GRAIN FARM:**

Buildings include 1975, 8-room home featuring kitchen w/ cherry cabinets, dinette area, living room w/sandstone fireplace, family room, office and half bath. Five bedrooms and full bath upstairs. Free gas per lease. Finished double garage. 58' x 80' shop/equipment building w/ heated shop area. 24' x 24' attached office w/ kitchenette & full bath. Bank barn 40' x 84'. Equipment storage buildings 30' x 36' and 30' x 60'. Three 12,000 bu. grain bins sell separate. LAND FEATURES: 170 acres top quality tillable land. 55+ acres woods w/\$100K present timber value & growing including black walnut planting. 3 acres blueberry patch.

**SALE #2 – TWO STORY HOME ON 1.5 ACRES WITH ADDRESS OF 11581 SPENCER MILLS RD.:**

Featuring modern oak kitchen w/gas range, refrigerator, & dishwasher. Dining room, living room, mud room, and half bath. Two bedrooms up plus large bath w/jacuzzi tub. Walkout basement w/free gas heat per lease. Large rear deck to backyard and blueberry patch.

**NOTE:** Opportunity knocking! For more information or help with financing call/text Geno Kiko at 330-495-0131 or Gene Kiko at 330-495-0041.

**TERMS ON REAL ESTATE:** 15% down auction day, balance due at closing. A 10% buyer's premium will be added to the highest bid to establish the purchase price, which goes to the seller. Any desired inspections must be made prior to bidding. All information contained herein was derived from sources believed to be correct. Information is believed to be accurate but not guaranteed.

**JD COMBINE – TRACTORS – BACKHOE:** JD 9500 4x4 combine, air networking, w/3496 thrashing & 5,183 engine hrs. - JD 920 20' grain head - JD 643 6-row corn head - JD 7810 MFWD, full cab, power shift, triple remote, 540/1000 PTO, 3pt, 18.4-42 rubber w/axle duals, 4,066 hrs. - JD 4955 MFWD, full cab, power shift, front weights, 3pt Quick Tach, triple remote, rebuilt rear end & trans, 20.8-38 duals, 7,241 hrs. - JD 4450 MFWD, full cab, power shift, front weights, 3pt Quick Tach, triple remote, 18.4-42 rubber, 6,294 hrs. - JD 4250 full cab, power shift, triple remote, 3pt, 540/1000 PTO, 18.4-38 rubber, 5,402 hrs. - JD 2950 full cab, quad range shift, double remote, 3pt, 540/1000 PTO, 18.4-34 rubber, 5,960 hrs. - JD 310C Backhoe, 7,359 hrs. - Massey-Ferguson 2135 diesel tractor w/loader, bucket & forks - Kubota B5200 4x4 diesel tractor w/front loader - EZ Steer by Ag Leader guidance system

**PLANTING & TILLAGE EQUIPMENT – BATWING MOWER – EQUIPMENT:** JD 1780 6/11 split row vac. planter, '12 Kinze 3500 8/15 interplant planter w/15 bean units w/brush meters & hopper extensions, 8 corn units w/ finger pickups, liquid 2x2 fert., 8 counters w/piston pump, KPM3 monitor pneumatic down pressure - '10 Case/IH 22' 330 turbo till - JD 1010 20' field cultivator w/rake - Brillion 108 22' folding Cultipacker - Brillion 20' folding spring tooth harrow - JD 235 25' tandem folding disk - JD 9 shank chisel plow w/ front disks - Sunflower 9 shank disk chisel plow - JD 2100 5 shank ripper - JD 2600 metric 4 bottom 16"-18" or 20" trip plow - JD A2600 metric 6 bottom 16"-18" or 20" trip plow - 9 shank hydro tool bar - JD 15-hole grain drill - J&M 525 bushel grain buggy - J&M 350 bushel gravity wagons w/augers & tarps (one used for fert., other for seed) - Grainway by Par-Kan w/fill tube and remote, 120 seed units - Schaben liquid nurse 1,000-gal tandem axle tank - '06 Westfield 10"x31' grain auger - Cardinal 62"x12" transport auger w/swing auger - 4"x16' grain auger seed cradle - Woods VW 180 batwing mower - Woods RC5 brush hog - Woods RM48 finish mower - 3pt 5' York rake - NH 28' skeleton elevator - front power angle blade for JD tractor

**GRAIN BINS:** GSI 30' wide 5-ring bin, 12K bushel, aeration floor, 8" unloading auger, 2 sumps - Brock 30' wide 5-ring bin, 12K bushel, dry floor - Butler 30' wide 5-ring bin, 12K bushel drying bin w/stirrer and 1-yr-old dryer

**ANTIQUE TRACTORS & EQUIPMENT:** '34 JD Big Block "GP" tractor (restored) - '36 JD "D" tractor (restored) - '51 JD "R" tractor (restored) - '51 JD "MC" crawler w/blade, 540 PTO, hyd. remotes - '59 AC D-17 tractor - Trail plows inc.: JD triple 7H 5-bottom plow, JD 55 3-bottom clutch lift plow, JD 55 4 14" plow, JD 44 2 bottom 14" plow, JD 14" single clutch lift, AC 3 16" plow - cycle bar mower - JD 2-row corn planter - AC 2-bottom 14" plow - offset sweet corn planter - Clipper no. 47 grain cleaner w/extra screens on trailer

**TRUCKS – JD XUV – JD MOWER – MORITZ TRAILERS:** '03 F-250 Super Duty Triton V-10 extended cab 4x4 truck w/Myers 8' power angle snow blade 94,138 mi. - '71 Chevy 80 dump grain truck w/454 engine (rebuilt 30K mi. ago) 5/4 spd. quadruplex trans., tandem drive, 18' Midwest grain box w/tarp, 139K mi. - '54 Ford 600 dump grain truck w/ 4-2 spd. trans., 256 cu. in. V8 engine, 10' box, shows 30,299 mi. - '12 JD XUV 550 4x4 ATV w/dump bed 304 hrs. - JD 727A Z-Trak zero turn 23HP mower, 369 hrs. - '08 Moritz 14,500 lb. tandem 20' w/ 5' tail goose neck trailer - '02 Moritz 12,000 lb. tandem 18' trailer

**BLUEBERRY EQUIPMENT – SHOP LATHE – EQUIPMENT – TOOLS – GUN SAFE – ETC:** Carpe Diem Tech. Laser bird deterrent - (2) multi bang propane cannons - Ishida Nova III digital scales - 2-door cooler - 225-gal. pales - approx. 17'x 15,000' netting on pneumatic 3pt roll - Misal 817 shop lathe w/ 17 1/2" swing, 3 & 4 jaw chuck - Invicta metal shaper - Coleburn #4 drill press flat belt drive - belt drive lathe - machinist tooling, bits, etc. - Napa mig welder - metal horz. band saw - hyd. shop press - parts washer - acetylene set - 550-gal. fuel tanks - pneumatic oil pumps - Lincoln 225 arc welder - Craftsman 10" radial arm saw - hand tools inc. wrenches, sockets, etc.: farm hardware, tractor parts, iron - JD 3000 pressure washer - platform scales - 12V sprayer - 12V fert. spreader - gear reduction w/motor - gas boy fuel pump - Corn sheller - '80 Arctic Cat Trail Cat 3000 snow mobile - Scorpion Stinger II snow mobile - picnic tables - John Deere 12 long gun 2-sided combo gun safe - metal cabinet - leather sofa - ant. hay knife - etc.

**TERMS ON CHATTELS:** Driver's license or State ID required to register for bidder number. Cash, Check, Debit Card, Visa, or Master Card accepted. 4% buyer's premium on all sales; 4% waived for cash or check. Information is believed to be accurate but not guaranteed.



Auctioneer/Realtor®  
**GENO KIKO**  
330-495-0131  
genokiko@kikocompany.com



Auctioneer/Realtor®  
**GENE KIKO**  
330-495-0041  
genekiko@kikocompany.com



**330.455.9357 • kikoauctions.com**

